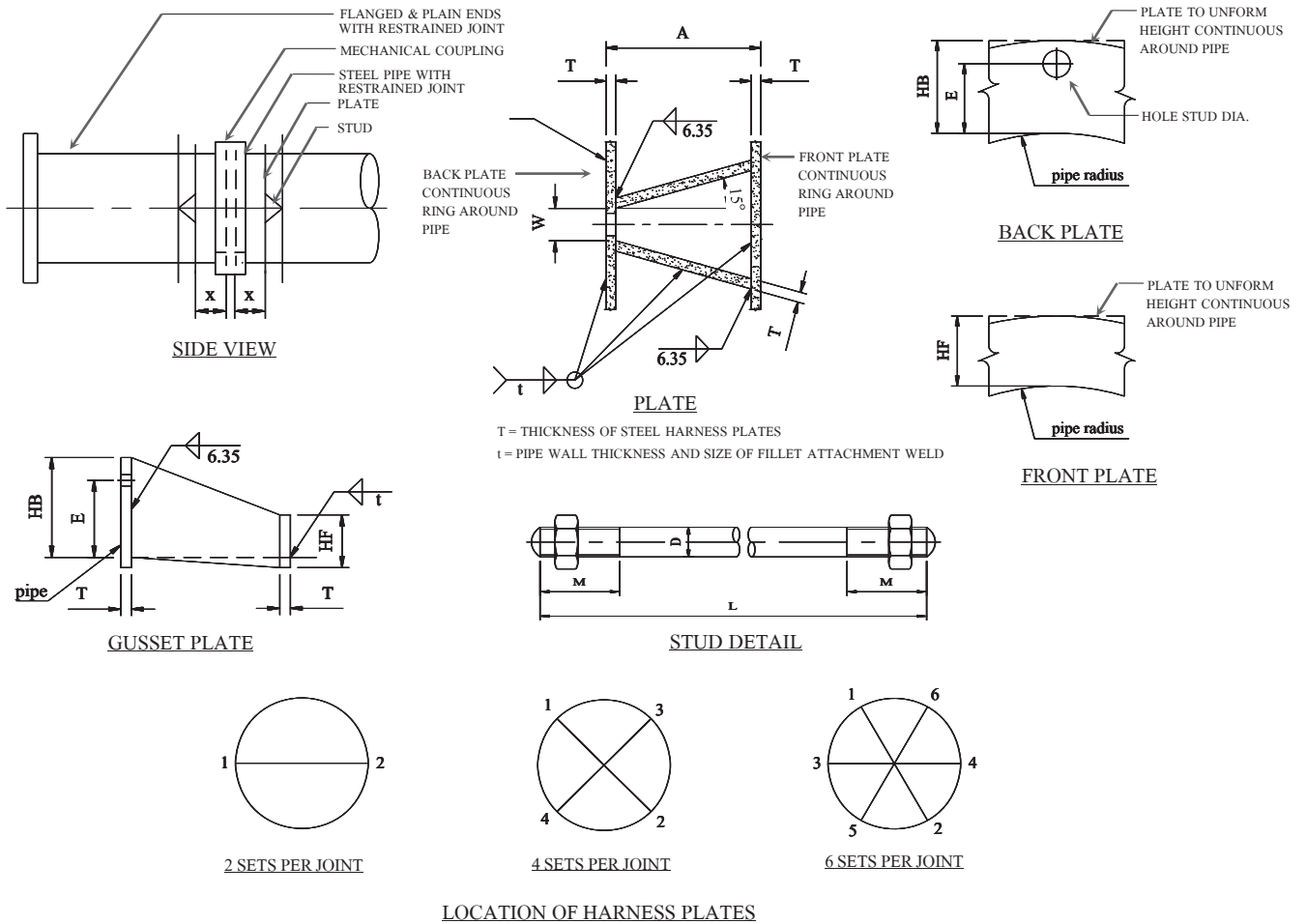


➤ Dimension for Ring Lugs and Studs



Unit : mm.

Nominal Diameter of Pipe mm.	Plates								Stud						
	T	A	W	HB	E	HF	Hole Dia.	X	D	No. of Stud	Width Across Flats of nut mm.	Thickness of nut mm.	Pitch Thread inch	L mm.	M mm.
300	11.1	85.725	34.925	38.425	76.2	23.0	19.05	230	15.875	2	26.97 - 26.19	16.03 - 14.91	11 UNC	762	76.2
400	15.9	139.7	41.275	107.95	79.375	27.0	25.4	230	22.225	2	36.52 - 35.41	22.48 - 21.16	9 UNC	889	82.55
500	15.9	146.05	44.45	114.3	82.55	27.0	28.575	230	25.4	2	41.28 - 40.00	25.70 - 24.28	8 UNC	914	85.72
600	19.1	190.5	50.8	127	95.25	27.0	34.925	230	31.75	2	50.8 - 49.22	31.78 - 30.15	8 UNC	1016	92.08
700	19.1	254	57.15	139.7	98.425	27.0	41.275	230	38.1	2	60.32 - 58.42	38.23 - 36.40	8 UNC	1168	98.42
800	25.4	304.8	63.5	149.225	101.6	32.0	47.625	240	44.45	2	69.85 - 67.61	44.68 - 42.65	8 UNC	1295	104.78
900	25.4	304.8	63.5	149.225	101.6	32.0	47.625	240	44.45	2	69.85 - 67.61	44.68 - 42.65	8 UNC	1295	104.78
1000	25.4	355.6	69.85	158.75	107.95	32.0	53.975	240	50.8	2	79.38 - 76.84	51.13 - 48.90	8 UNC	1422	111.12
1200	25.4	273.5	60.325	142.875	98.425	32.0	44.45	240	41.275	4	65.07 - 63.02	41.45 - 39.52	8 UNC	1244	101.6
1500	25.4	355.6	69.85	158.75	107.95	32.0	53.975	240	50.8	4	79.38 - 76.84	51.13 - 48.90	8 UNC	1422	111.12
1800	25.4	355.6	69.85	158.75	107.95	34.5	53.975	240	50.8	6	79.38 - 76.84	51.13 - 48.90	8 UNC	1422	111.12

- Note:**
- Steel plates used in fabrication of harness luge shall be JIS G 3101 Grade SS400 or equivalent.
 - Stud bolts and nuts shall be made of steel : stud bolts conforming to ASTM A-193, grade B7, nut conforming to ASTM A-194, Grade 2H or equal and shall be hot-dipped galvanized.